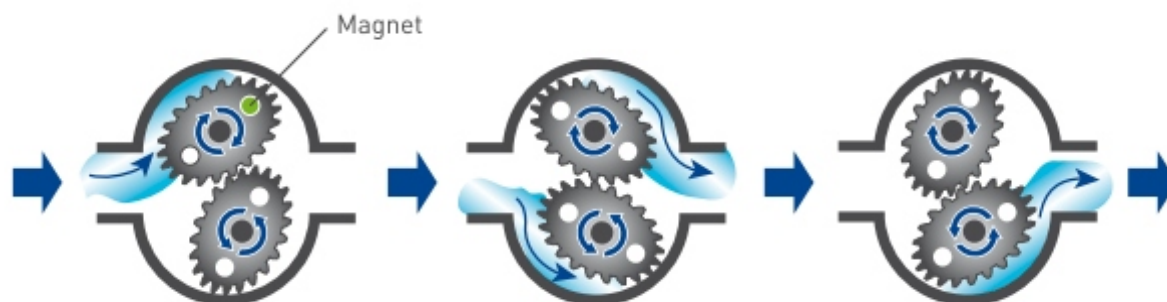


ZT707 OVAL GEAR FLOW METER

Introduction

Zt707 oval gear Flowmeter is widely used in flux measurement in industrial field such as oil development, oil refining, chemical, commerce, oil storage. There is a pair of oval gear in it. The pair of oval gear will keep rotating on the axis under the role of liquid pressure difference between inlet and outlet. Liquid flux through the Flowmeter will be known by testing gears' rotation number. Fluid passing through the meter causes the rotors to turn, One of the rotors (the active rotor) is fitted with magnets. The passing of the magnets are picked up by the sensing elements (Hall Effect sensors) located in the Pulse Circuit Board. The excitation of these switches provides a 'Raw Pulse Output' which relates to the K-Factor. This Pulse Output Signal can either be fed directly to an external receiving element or alternatively to an LC Display which conditions the Pulse input signal to display volume of fluid passed.



Features

Output	: Digital Pulse
Power	: 12-24VDC
High Accuracy	: 1% of FS
Service	: Liquid ,oil
Line Size	: Up to 100mm
Enclosure	: Aluminum anodize/S.S-304/S.S-316
Rotor	: Aluminum anodize/SS316/PPS
O-ring	: NBR/Viton
Shaft	: Hard SS316
Repeatability	: 0.1%
Shaft	: Hard SS316
Working pressure	: 5MPa For Aluminum Body
Fluid& Ambient temperature	: -40to 80 Degree
Connection	: Thread (M/F) or Flange

Features:

Applicable for fluids such as lubrication oils, mineral oils, hydraulic oils, fuels, liquified gases and others
Lower Power consumption
Positive displacement meter for volumetric flow rate or total flow measurement
High-quality construction for long service life and high reliability
Long-term stability
High measurement accuracy and repeatability
Easy installation

Application

Oil



Oval Gear Flow Meter
ZT707

Ordering Information

ZT707-XXXXXXXXXX (10 Digit code)

Option 1: Input Signal

- 0- 003mm
- 1- 004mm
- 2- 006mm
- 3- 008mm
- 4- 012mm
- 5- 020mm
- 6- 025mm
- 7- 040mm
- 8- 050mm
- 9- 080mm

Option 2: Power(X)

- 0 – 24VDC

Option 3: Digital Output

- 0 - Pulse

Option 4: MOC Selections

- 0 – SS304 (Default)
- 1 – SS316L
- 2- User Define

Option 5: Connection Types

- 0 – Flange Type (Default)
- 1 – Threaded Type
- 2 – Tri clover Clamp
- 4 – User Define

Option 6: Enclosure Types(X)

- 0 – Anodized Aluminum
- 1 – SS316L
- 2- SS304

Option 7:(X)

- 0 – None

Option 8:(X)

- 0 – None

Option 9:(X)

- 0 – None

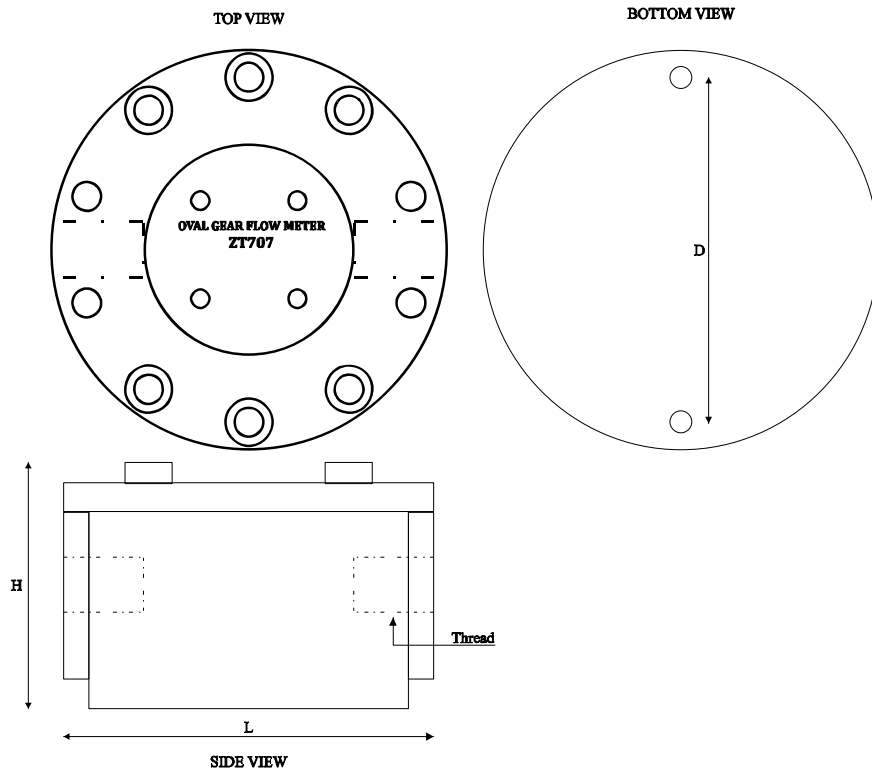
Option 10:(X)

- 0 – None

Sr.No.	Line Size(mm)	Flow (LPM)
0	3mm(1/4" BSP Threads)	0.05-30
1	4mm(1/4" BSP Threads)	0.2-60
2	6mm(1/4" BSP Threads)	5-150
3	8mm(3/8" BSP Threads)	20-300
4	12mm(1/2" BSP Threads)	50-1200
5	20mm(3/4" BSP Threads)	150-2000
6	25mm(1" BSP Threads)	200-4000
7	40mm(1.5" Flange)	500-10000
8	50mm(2" Flange)	600-20000
9	80mm(3" Flange)	1000-50000

Oval Gear Flow Meter
ZT707

Dimension Details



Model No.	L	H	D*d
ZT707-020	82 MM	60 MM	74 MM X M5
ZT707-025	103 MM	71 MM	95.5 MM X M5
ZT707-040	127 MM	108 MM	120 MM X M5